

Fan Jet



Description - Produces a fan shaped sheet of water when installed at a 45 degree angle.

Sizes - Available with 25mm and 40mm inlet sizes.

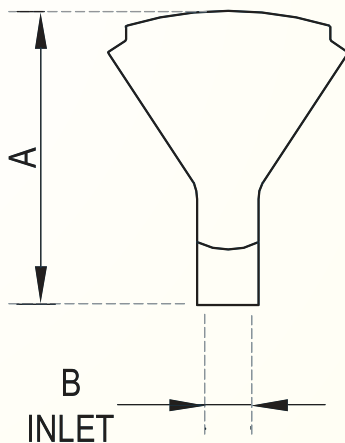
MOC - Cast Bronze

Custom - The width of the fan shaped water effect can be customized.

Type - Water level independent (no change in water effect with varying water level)

Dimensions

SAP Code	MODEL	A	Inlet (B)
NOZ11.02	Fan Jet -25	190mm	25mm
NOZ11.03	Fan Jet -40	190mm	40mm



Flow Rate for Fan Jet (Performances at 45°)

MODEL		Fan Jet -25	Fan Jet -40
Spray Ht.(in m)	Spray Throw(in m)	LPM	LPM
0.50	2.00	75	98
1.00	4.00	108	114
1.50	6.00	132	147
2.00	7.50	150	164
3.00	9.00		197