

Foam Jet

Description - Produces a single stream of foaming water. The design creates a pressure drop inside the nozzle which sucks in air and mixes it with the water stream to create an impressive water effect.

Sizes - Available from 12mm to 50mm inlet sizes.

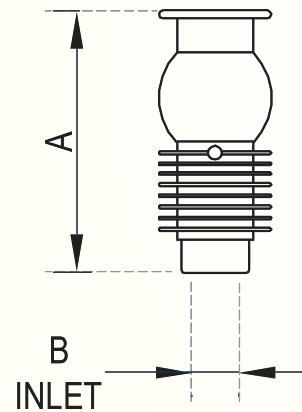
MOC - Machined Brass.

Type - Water level independent (no change in water effect with varying water level)



Dimensions

SAP Code	MODEL	A	Inlet (B)
NOZ15.04	Foam Jet -12	100mm	12mm
NOZ15.01	Foam Jet -25	180mm	25mm
NOZ15.02	Foam Jet -40	180mm	40mm
NOZ15.03	Foam Jet -50	180mm	50mm



Flow Rate for Foam Jet

MODEL	Foam Jet -12	Foam Jet -25	Foam Jet -40	Foam Jet -50
Spray Ht.(in m)	LPM	LPM	LPM	LPM
0.30	19	27	102	115
0.50	24	35	117	149
1.00	34	58	132	210
1.50		70	147	256
2.00			162	296