

Hollow Jet

Description - Similar to the Vertical jet the Hollow jet produces a single clear stream jet except that unlike the Vertical jet the jet of water produced by this jet is not solid due to the design of the jet. This helps reduce the overall pumping capacity required to produce the desired effect. This jet is only used for bore sizes in excess of 20mm.

Sizes - Available with 40mm to 100mm inlet sizes and varying bore sizes.

MOC - Cast Aluminum, Cast Bronze & Brass.

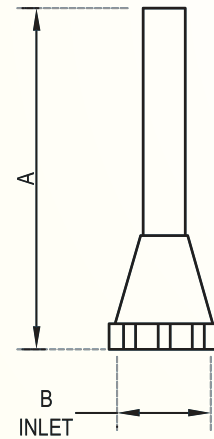
Custom - Custom bore sizes are possible.

Type - Water level independent (no change in water effect with varying water level)



Dimensions

SAP Code	MODEL	A	Inlet (B)
NOZ18.04	Hollow Jet (40/20)	250mm	40mm
NOZ18.03	Hollow Jet (50/25)	300mm	50mm
NOZ18.02	Hollow Jet (75/50)	305mm	75mm
NOZ18.01	Hollow Jet (100/75)	470mm	100mm



Flow Rate for Hollow Jet Nozzle

MODEL	Hollow Jet (40/20)	Hollow Jet (50/25)	Hollow Jet (75/50)	Hollow Jet (100/75)
Spray Ht.(in m)	LPM	LPM	LPM	LPM
3.00	116	145		
4.00	133	167		
6.00	163	205	406	
8.00	188	236	472	
10.00		264	528	
12.00			578	
15.00			647	970
18.00			708	1062
20.00			746	1084
25.00				1252
30.00				1371
40.00				1583
50.00				1770