



Lily Nozzle

Description - Produces a clear sheet of water similar to the bell nozzle but in a flat cone shape. Dia of the cone can be adjusted by turning the top of the nozzle clockwise or anticlockwise.

Sizes - Available from 25mm to 50mm inlet sizes and 200mm to 300mm length with pipe dia varying from 50mm to 75mm.

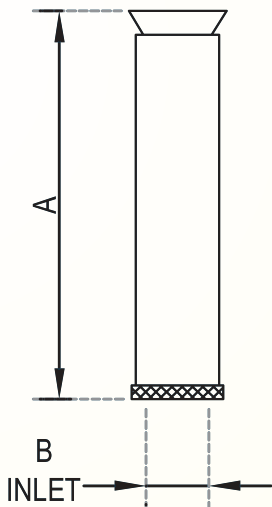
MOC - Cast Bronze & Brass

Custom - Custom nozzle heights are possible.

Type - Water level independent (no change in water effect with varying water level)

Dimensions

| SAP Code | MODEL | A | Inlet (B) |
|----------|----------------|-------|-----------|
| NOZ20.02 | Lily 25/50/200 | 200mm | 25mm |
| NOZ20.03 | Lily 25/50/250 | 250mm | 25mm |
| NOZ20.04 | Lily 40/75/250 | 250mm | 40mm |
| NOZ20.05 | Lily 50/75/300 | 300mm | 50mm |



Flow Rate for Lily Nozzle

| MODEL | Lily 25/50/200 | Lily 25/50/250 | Lily 40/75/250 | Lily 50/75/300 |
|-------------------|----------------|----------------|----------------|----------------|
| Spread dia (in m) | LPM | LPM | LPM | LPM |
| 1.00 | 24 | | | |
| 1.50 | 29 | 29 | | |
| 2.00 | 33 | 33 | 58 | 121 |
| 3.00 | 41 | 41 | 72 | 147 |
| 4.00 | 47 | 47 | 83 | 170 |
| 6.00 | 57 | 57 | 102 | 208 |
| 8.00 | | | 117 | 240 |
| 10.00 | | | 131 | 268 |
| 12.00 | | | 160 | 294 |