

Programmable Water Curtain

Description - A unique nozzle designed to allow a controlled flow of water from an upper trough to a lower pool. When installed in large numbers in a line innumerable patterns of falling water can be created by careful programming.

Can create a very interesting indoor water feature which will promise to keep the spectators spell bound.

Sizes - Can be designed in various shapes and sizes using multiple nozzles.

MOC - FRP pool with steel frame, Machined Brass & SS

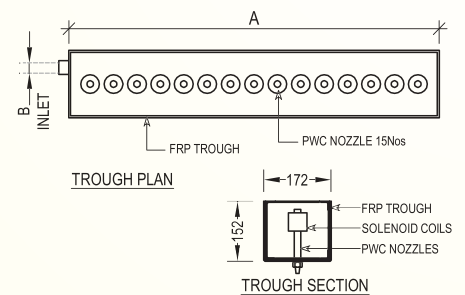
Custom - All Programmable water features are custom designed.

Type - Designed to allow each stream of free falling water to be individually controlled to create wide variety of effects.



Dimensions

SAP Code	MODEL	A	Inlet (B)
NOZ42.01	PWC Nozzle Set with Water switch, Control Coil & FRP Trough 15Nos. Nozzles	1.0m	25mm



Flow Rate for Programmable Water Curtain

MODEL	PWC
Fall Ht.(in m)	LPM
3.00	18