

Vertical Jet AF



Description - Smooth bore single clear stream jet with adjustable direction. Normally used in groups to form a circle or straight line of jets.

Sizes - Available from 12mm to 50mm inlet sizes with a variety of bore sizes.

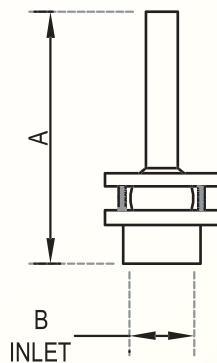
MOC - Cast Bronze & Brass with SS Fasteners.

Custom - Custom inlets, or threads are possible.

Type - Water level independent (no change in water effect with varying water level)

Dimensions

SAP Code	MODEL	A	Inlet (B)	Outlet
NOZ26.15	Vertical Jet (AF-12-6)	80mm	12mm	6mm
NOZ26.14	Vertical Jet (AF-20-8)	80mm	20mm	8mm
NOZ26.13	Vertical Jet (AF-20-10)	80mm	20mm	10mm
NOZ26.12	Vertical Jet (AF-25-12)	170mm	25mm	12.7mm
NOZ26.11	Vertical Jet (AF-40-16)	180mm	40mm	16mm
NOZ26.10	Vertical Jet (AF-40-19)	180mm	40mm	19mm
NOZ26.16	Vertical Jet (AF-50-25)	180mm	50mm	25mm



Flow Rate for Vertical Jet AF Nozzle

MODEL	Vertical Jet (AF-12-6)	Vertical Jet (AF-20-8)	Vertical Jet (AF-20-10)	Vertical Jet (AF-25-12)	Vertical Jet (AF-40-16)	Vertical Jet (AF-40-19)	Vertical Jet (AF-50-25)
Spray Ht.(in m)	LPM	LPM	LPM	LPM	LPM	LPM	LPM
1.00	10	14	21	35	54	77	
1.50	11	16	26	43	66	98	
2.00	12	19	30	48	76	106	185
3.00	13	24	36	59	92	130	226
4.00	14	27	42	68	106	150	261
6.00			51	83	130	185	320
8.00					151	213	369
10.00					169	238	412
12.00							452
15.00							506
18.00							554
20.00							584
25.00							652
30.00							715
40.00							825
50.00							922