

## Vertical Jet

**Description** - Smooth bore single clear stream jet with fixed direction, should be installed with an additional universal joint in case directional adjustment is required. Can be installed vertically or at an angle using two 90-degree bends.

**Sizes** - Available from 20mm to 100mm inlets with varying bore sizes

**MOC** - Cast Bronze / Brass

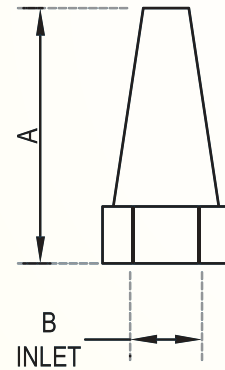
**Custom** - Custom bore sizes and inlets are possible.

**Type** - Water level independent (no change in water effect with varying water level)



### Dimensions

SAP Code	MODEL	A	Inlet (B)	Outlet
NOZ26.09	Vertical Jet -20	80mm	20mm	10mm
NOZ26.01	Vertical Jet -25	100mm	25mm	13mm
NOZ26.03	Vertical Jet -40	150mm	40mm	20mm
NOZ26.04	Vertical Jet -50	205mm	50mm	25mm
NOZ26.05	Vertical Jet -65	205mm	65mm	32mm
NOZ26.06	Vertical Jet -75	225mm	75mm	37mm
NOZ26.07	Vertical Jet -100	275mm	100mm	50mm



### Flow Rate for Vertical Jet Nozzle

MODEL	Vertical Jet -20	Vertical Jet -25	Vertical Jet -40	Vertical Jet -50	Vertical Jet -65	Vertical Jet -75	Vertical Jet -100
Spray Ht.(in m)	LPM	LPM	LPM	LPM	LPM	LPM	LPM
1.00	21	36	77				
1.50	26	44	98				
2.00	30	50	106	185	303	404	738
3.00	36	62	130	226	371	495	904
4.00	42	71	150	261	427	571	1043
6.00	51	87	185	320	524	700	1277
8.00			213	369	604	808	1475
10.00			238	412	675	904	1649
12.00				452	740	990	1806
15.00				506	827	1106	2020
18.00				554	906	1212	2212
20.00				584	955	1277	2332
25.00				652	1068	1428	2608
30.00				715	1170	1564	2856
40.00				825	1351	1806	3298
50.00				922	1510	2020	3688