

## Wall Flush Jet



**Description** - Designed to be installed on pool walls or in kids play areas as a spray jet. Produces two rows of fine jets radiating left and right from a central vertical axis.

**Sizes** - Available in 25mm inlet.

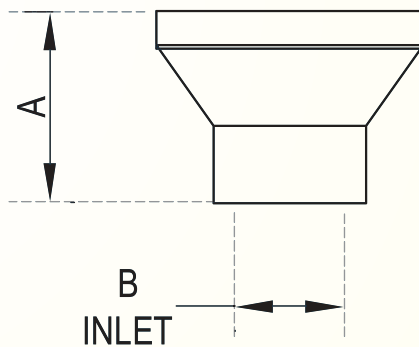
**MOC** - Cast Bronze

**Custom** - The angle of the spray and the no of jets can be customized.

**Type** - The nozzle has to be installed flush with the surface of the wall at a height of approx 2.5m from the floor level.

### Dimensions

SAP Code	MODEL	A	Inlet (B)
NOZ27.01	Wall Flush Jet 25/2/13	50mm	25mm



### Flow Rate for Wall Flush Jet

MODEL	Wall Flush Jet 25/2/13
Spray dist.(in m)	LPM
0.50	16
1.00	22
1.50	27
2.00	31